

# BOARD OF ELECTIONS - 1450

## MISSION

The mission of the Board of Elections is to ensure the integrity of voter registration and elections in Albany County.

## ABOUT OUR DEPARTMENT

The Board of Elections has responsibilities in three main areas:

**Administration of Elections:** The Board is responsible for the proper management of both primary and general elections, as well as school board, fire district, village, and special elections throughout Albany County.

**Voter Registration:** The Board promotes voter registration within the County. Registrations are reviewed to ensure that voters' addresses reflect actual residency. This also includes database management for more than 230,000 current and expired registrants.

**Education and Certification:** The Board conducts annual seminars and examinations relating to election procedures and technology for approximately 1,400 election inspectors and ballot clerks in Albany County, as required by law. Information is also provided to candidates, political units, public entities, and the general public.

The Board's operations are supervised by two Commissioners, each representing one of the two major political parties in New York State. The Commissioners are nominated by majority vote of the County Committees of their respective political parties and are confirmed by the County Legislature. The New York State Election Law requires equal representation of the two major political parties in the appointment of Board employees.

## OUTCOMES

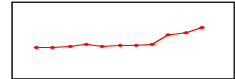
- Voter registration and elections in Albany County will be conducted honestly, fairly, lawfully, and efficiently to ensure the integrity of the election process and maximum participation by eligible voters.
- The Board will rapidly release complete election results.

## HELP AMERICA VOTE ACT (HAVA)

The implementation of HAVA in New York State requires several changes which will improve the conduct of elections and voter registration procedures. Among major changes required by HAVA are:

- Replacement of lever machines with voting systems that increase the accessibility for persons with disabilities, the provision of alternate language in the voting booths as required by the Voting Rights Act of 1965, providing all voters with an opportunity to assure the accuracy of their vote before it is cast;
- Establishment of a single, interactive electronic statewide voter registration database that will help eliminate duplicate registrations;
- Verification of voter identification information, enhancing New York State's ability to maintain complete and correct voter registration lists; creation of a state-based administrative procedure for hearing and resolving citizen complaints involving violations of HAVA provisions;
- Use of provisional ballots; and
- The introduction of ADA-compliant voting machines.

## APPROPRIATION HISTORY



1998:	\$835,386
1999:	\$884,567
2000:	\$951,442
2001:	\$1,263,064
2002:	\$1,034,704
2003:	\$1,137,705
2004:	\$1,059,068
2005:	\$1,249,152
2006:	\$2,738,858
2007:	\$3,088,813
2008:	\$3,890,962

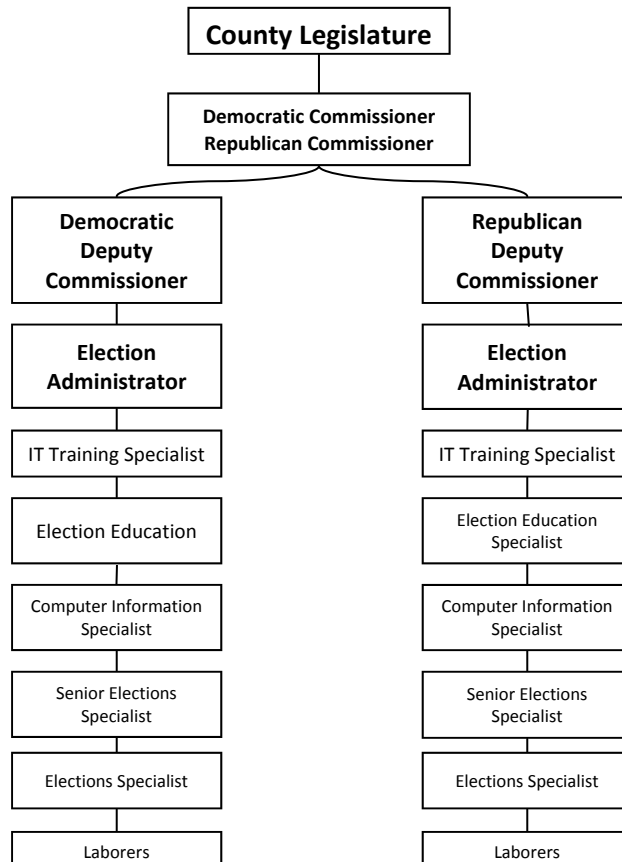
## CONTACT INFORMATION

Board of Elections  
County of Albany  
32 North Russell Road  
Albany, New York 12206  
Office: (518) 487-5060  
Fax: (518) 487-5077

# BOARD OF ELECTIONS - 1450

## DEPARTMENT HIGHLIGHTS

- Based on completion of significant equipment purchases for HAVA compliance in 2008, the 2009 Executive Budget includes a reduction of \$1,113,099 in appropriations. This includes a reduction in equipment purchases of \$359,482 and \$833,126 in contractual purchases,
- The Budget reflects a reduction of \$581,757 in revenues for the Board based on the end of State and Federal Grants for polling access as well a decrease to Election Chargeback revenues totaling \$251,550. The Election Chargeback revenue is included utilizing the department's statement of expenses incurred on behalf of municipalities as presented for the 2007 election cycle and are considered conservative for the 2009 budget.
- The Executive Budget includes \$222,105 in funding for maintenance expenses for the Board's new location at the former Ann Lee Nursing Home site. These monies are provided to the department for stewardship over the full financial and contractual obligations of their new location.
- Based on cost figures provided by the Commissioners of Board of Elections to the Legislature, election-day costs, the basis of municipal charge-backs, fell in 2007 and therefore billings by the Board of Elections to municipalities are projected to decline \$251,550 to \$612,600. This Budget proposes a three-year phase-in of a new method of allocating such costs. Formerly based on equalized assessed property values, the method should be changed to actual costs for each municipality. Thus, in 2009, one-third would be based on actual costs and two-thirds based on equalized assessed property values. In 2010, the proportions would be reversed to two-thirds actual costs and one-third equalized assessed value. In 2011, all costs would be allocated to municipalities based on election-day costs within each municipality. Billings for all elections charges revenues will be submitted to municipalities by the Board of Elections with payments submitted to the Division of Finance.



# BOARD OF ELECTIONS - 1450

Account	Description	2007 Expended	2008 Adjusted	2009 Proposed	2008-09 Change	2008-09 Percent Change												
<b>Appropriations</b>																		
<b>Board of Elections-(1450)</b>																		
	Personnel Services	\$ 984,514	\$ 1,089,233	\$ 1,119,932	\$ 30,699	2.8%												
	Equipment	\$ 16,951	\$ 359,482	\$ 0	\$(359,482)	(100.0%)												
	Contractual Expenses	\$ 965,312	\$ 2,141,929	\$ 1,308,803	\$(833,126)	(38.9%)												
	Fringe Benefits	\$ 335,067	\$ 300,318	\$ 319,218	\$ 18,900	6.3%												
	<b>Board of Elections</b>	<b>\$ 2,301,844</b>	<b>\$ 3,890,962</b>	<b>\$ 2,747,953</b>	<b>\$(1,143,009)</b>	<b>(29.4%)</b>												
	<b>Appropriations</b>	<b>\$ 2,301,844</b>	<b>\$ 3,890,962</b>	<b>\$ 2,747,953</b>	<b>\$(1,143,009)</b>	<b>(29.4%)</b>												
<b>Revenue</b>																		
	Board of Elections	\$ 0	\$(1,194,357)	\$(612,600)	\$ 581,757	(48.7%)												
	<b>Revenue</b>	<b>\$ 0</b>	<b>\$(1,194,357)</b>	<b>\$(612,600)</b>	<b>\$ 581,757</b>	<b>(48.7%)</b>												
	<b>County Share</b>	<b>\$ 2,301,844</b>	<b>\$ 2,696,605</b>	<b>\$ 2,135,353</b>	<b>\$(561,252)</b>	<b>(20.8%)</b>												
<table style="width: 100%; border-collapse: collapse;"> <thead> <tr> <th style="width: 40%;"></th> <th style="text-align: right;">2008 Adjusted</th> <th style="text-align: right;">2009 Requested</th> <th style="text-align: right;">2009 Proposed</th> <th style="text-align: right;">2008-09 Changes</th> <th style="text-align: right;">2008-09 Percent Change</th> </tr> </thead> <tbody> <tr> <td>BOARD OF ELECTIONS</td> <td style="text-align: right;">26</td> <td style="text-align: right;">36</td> <td style="text-align: right;">26</td> <td style="text-align: right;">0</td> <td style="text-align: right;">0.0%</td> </tr> </tbody> </table>								2008 Adjusted	2009 Requested	2009 Proposed	2008-09 Changes	2008-09 Percent Change	BOARD OF ELECTIONS	26	36	26	0	0.0%
	2008 Adjusted	2009 Requested	2009 Proposed	2008-09 Changes	2008-09 Percent Change													
BOARD OF ELECTIONS	26	36	26	0	0.0%													