

AGING - 6772, 6778

MISSION

The mission of the Department for Aging is to enable seniors to maintain independent and self-directed lives through supportive community services to seniors, their families, and caregivers.

ABOUT OUR DEPARTMENT

The Department plays a critical role in ensuring services are available to meet the need for home and community-based long term care in Albany County. Department services are instrumental in carrying out Albany County's commitment to serving the growing elderly population and supporting caregivers by promoting services that make it possible for seniors to live with dignity and independence in their communities.

Services supported by the Department include home delivered meals, adult day care, preventive health education, transportation, employment services, legal counseling, and health insurance information and counseling. In addition, Albany County has committed resources well beyond the State required minimum to enable the Expanded In-home Services to the Elderly Programs (EISEP) to serve a greater number of individuals than ever before. EISEP assists older people who need help with activities of daily living (such as dressing, bathing, personal care, shopping, and cooking), and want to remain at home.

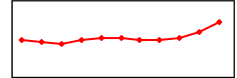
OUTCOME

Albany County seniors will lead lives of dignity, independence, and self-sufficiency in their own homes and communities.

DEPARTMENT HIGHLIGHTS

- Demand for services has grown steadily with the launching of Albany County NY Connects, the Point of Entry (POE) for information and assistance related to long term care. The County has demonstrated a strong commitment to meeting the increasing demand for home and community based services by steadily increasing funding for programs.
- The County will continue expanding EISEP in order to meet the growing demand for home and community based care. EISEP is a cost effective means of providing long term care in people's own homes by providing case management and assistance with activities of daily living.
- Albany County has seen a surge in demand for the Meals on Wheels Program which is anticipated to continue into 2009 as elderly, homebound individuals face economic pressures from rising energy and food costs. Increased funding has been allocated to the Meals on Wheels program in 2009 to help assure the continued provision of nutritional assistance to elderly individuals living in Albany County.

APPROPRIATION HISTORY

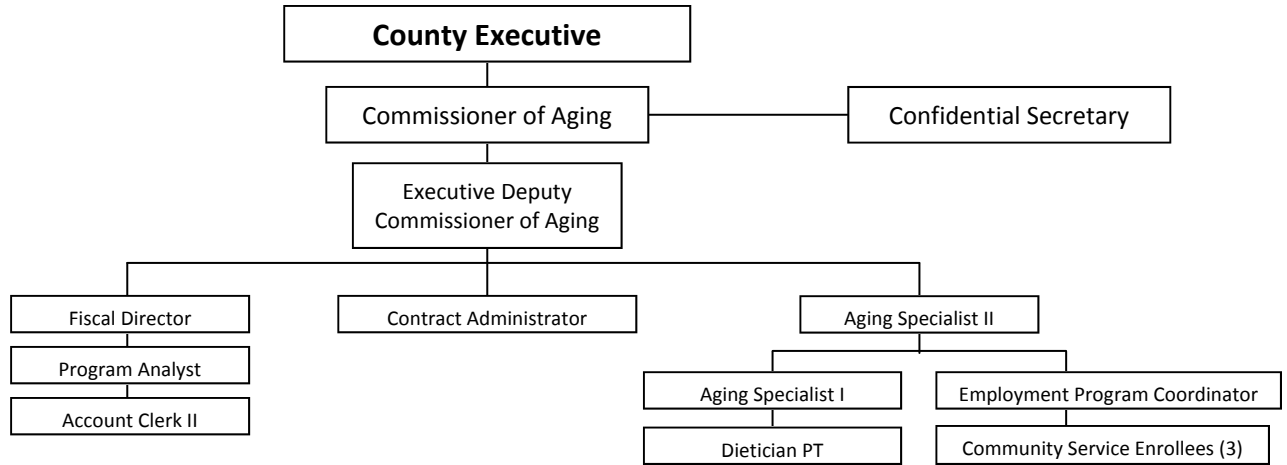


1998:	\$3,648,990
1999:	\$3,521,032
2000:	\$3,486,727
2001:	\$3,670,531
2002:	\$3,861,494
2003:	\$3,920,620
2004:	\$3,727,696
2005:	\$3,763,179
2006:	\$3,895,055
2007:	\$4,306,976
2008:	\$5,054,859

CONTACT INFORMATION

Department for the Aging
County of Albany
162 Washington Avenue
Albany, New York 12210
Office: (518) 447-7177
Fax: (518) 447-7188

AGING - 6772, 6778



Account	Description	2007 Expended	2008 Adjusted	2009 Proposed	2008-09 Change	2008-09 Percent Change	
Appropriations							
Aging-(6772)							
	Personnel Services	\$ 466,159	\$ 513,658	\$ 489,611	\$(24,047)	(4.7%)	
	Equipment	\$ 0	\$ 0	\$ 0	\$ 0	0.0%	
	Contractual Expenses	\$ 4,016,975	\$ 4,281,174	\$ 5,017,503	\$ 736,329	17.2%	
	Fringe Benefits	\$ 116,346	\$ 145,801	\$ 143,032	\$(2,769)	(1.9%)	
	Aging-(6772)	\$ 4,599,481	\$ 4,940,633	\$ 5,650,146	\$ 709,513	14.4%	
Aging Programs-(6800)							
	Contractual Expenses	\$ 0	\$ 0	\$ 0	\$ 0	0.0%	
	Aging Programs-(6800)	\$ 0	\$ 0	\$ 0	\$ 0	0.0%	
Employment-Elderly/Handicapped-(6778)							
	Personnel Services	\$ 80,456	\$ 91,046	\$ 99,033	\$ 7,987	8.8%	
	Contractual Expenses	\$ 3,895	\$ 4,220	\$ 2,358	\$(1,862)	(44.1%)	
	Fringe Benefits	\$ 9,358	\$ 18,960	\$ 21,596	\$ 2,636	13.9%	
	Employment-Elderly/Handicapped-(6778)	\$ 93,709	\$ 114,226	\$ 122,987	\$ 8,761	7.7%	
	Total Appropriations	\$ 4,693,189	\$ 5,054,859	\$ 5,773,133	\$ 718,274	14.2%	
Revenue							
	Aging-(6772)	\$(3,397,458)	\$(3,293,159)	\$(3,171,951)	\$ 121,208	(3.7%)	
	Employment-Elderly/Handicapped-(6778)	\$(63,248)	\$(75,513)	\$(83,500)	\$(7,987)	10.6%	
	Total Revenue	\$(3,460,706)	\$(3,368,672)	\$(3,255,451)	\$ 113,221	(3.4%)	
	County Share	\$ 1,232,483	\$ 1,686,187	\$ 2,517,682	\$ 831,495	49.3%	
			2008 Adjusted	2009 Requested	2009 Proposed	2008-09 Changes	2008-09 Percent Change
	AGING		11	11	11	0	0.0%
			11	11	11	0	0.0%